

TECHNICAL DATASHEET



SINCLAIR BATH FILLER

Barcode 5055369025534
Product Code TSI303
Finishes Chrome
Product Type Bath Filler
Water Pressure LP2 - 0.2 bar pressure minimum
Standards Complies with BS5412, EN200



Flowrates

Bar	Flow l/min
0.1	10
0.5	28
1	38
2	> 38
2.4	> 38

Requirement Suitable for all plumbing systems

Guarantee & Aftercare

During installation extra care must be taken to avoid damaging the fittings. We provide a 5 year guarantee against faulty workmanship or materials (excluding serviceable parts), providing they have been installed, cared for and used in accordance with our instructions.

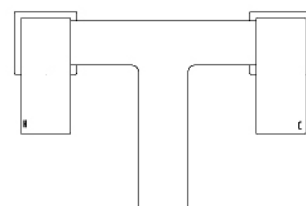
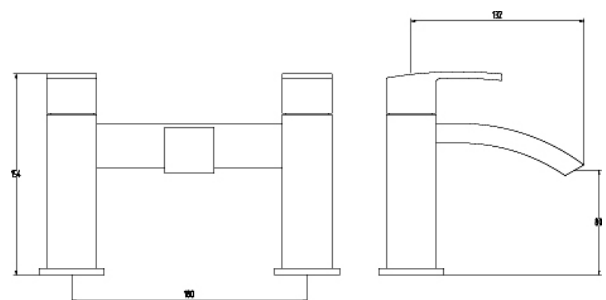
ADDITIONAL INFORMATION

- **CERAMIC DISC TECHNOLOGY**
- **Suitable for use with flow regulators**

COMPLIANCE: Pending

CUSTOMER CARE:

For further information please call 01282 446789



KEY TO PRODUCT PRESSURE REQUIREMENTS

LP - 0.1 bar min

LP2 - 0.2 bar min

MP - 0.5 bar min

HP1 - 1 bar min

HP2 - 2 bar min